



**DEPARTMENT OF ELECTRICAL AND ELECTRONICS ENGINEERING**

20.06.2022

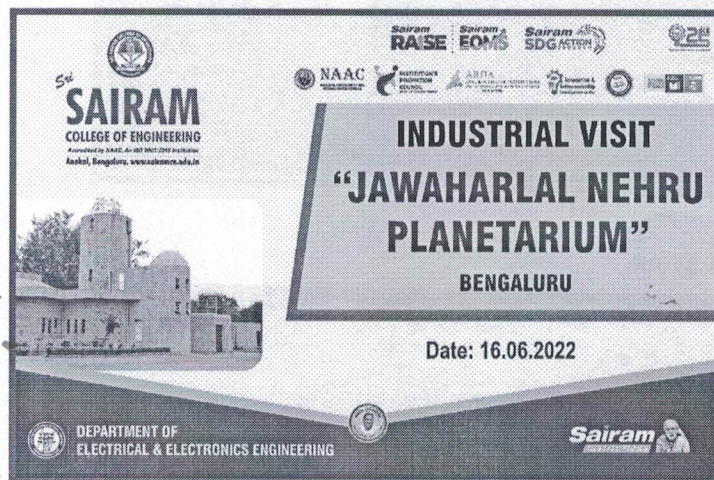
**Report on Industrial Visit to Jawaharlal Nehru Planetarium,  
Bengaluru.**

The department of Electrical and Electronics Engineering had organized an Industrial visit to Jawaharlal Nehru Planetarium for Ist year F section (EEE, ME) students as a part of Industrial visit in the Ist year to impart the knowledge of basic science concepts in reality students thoroughly enjoy the experience of leaving about celestial bodies, science concepts, wonders of science planetary system and energy systems along with working of satellite, rockets and telescope.

**Location:** Sri T, Sankey Rd, High Grounds, Bengaluru, Karnataka 560001

**Owner:** Department of Science and Technology, Government of Karnataka

**Purpose:** To gain the Knowledge of entire Solar system, Celestial bodies and Basics of science concepts.



We attended the 12:30 pm show in English about Solar System. This 45-minute 4K resolution full dome, sky theatre show takes you on a voyage to other planets and our Solar System. Cliffs on Mercury, dazzling Venus with its thick clouds, Swirling dust storms, valleys, the gigantic Mount Olympus on Mars are breath taking. The beauty of tumbling asteroids, giant Jupiter and its colorful stripes are surely impressive. The journey through the rings of Saturn reveals the structure and mesmerizes



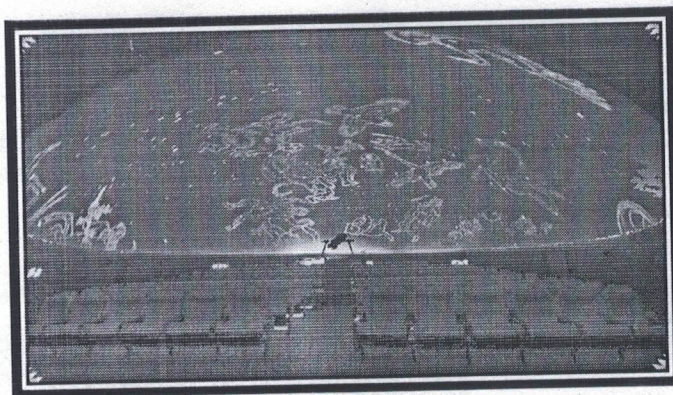


## DEPARTMENT OF ELECTRICAL AND ELECTRONICS ENGINEERING

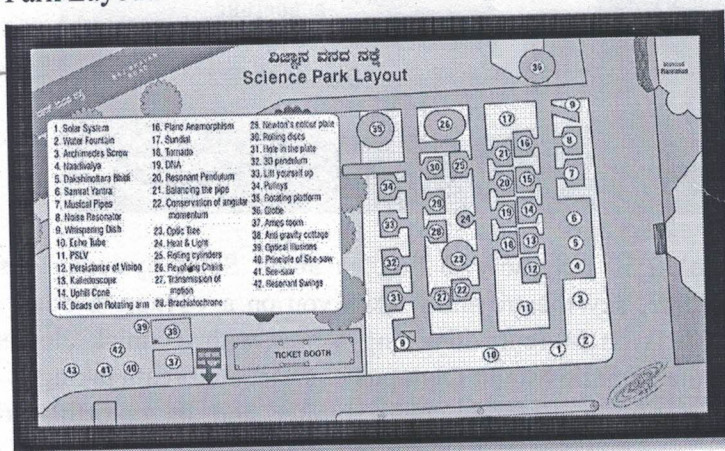
with the details. Gas giants Uranus and Neptune along with their respective moons take you to a wonderland; the dwarf planets and dusty comet are explained with effective animations. The Sun in all its brilliance shows up its interior, surface features like sunspots and solar flares. The Moon with its beautiful landscapes will make you dream of looking at earth from its horizon. Stunning high-resolution images of the Sun and other objects brings out unimaginable joy and unforgettable experience. The show will provide an immersive experience taking you through a great voyage across the Solar System.

Photos: -

### 1. Sky Theatre.



### 2. Science Park Layout.

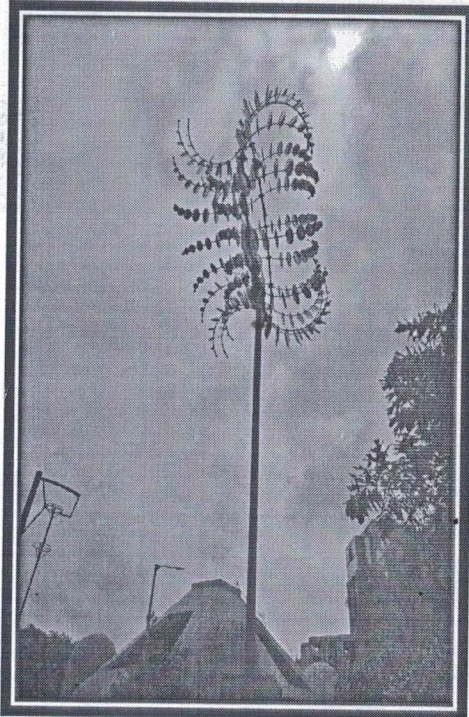




**DEPARTMENT OF ELECTRICAL AND ELECTRONICS ENGINEERING**



**3. Students Pictures.**



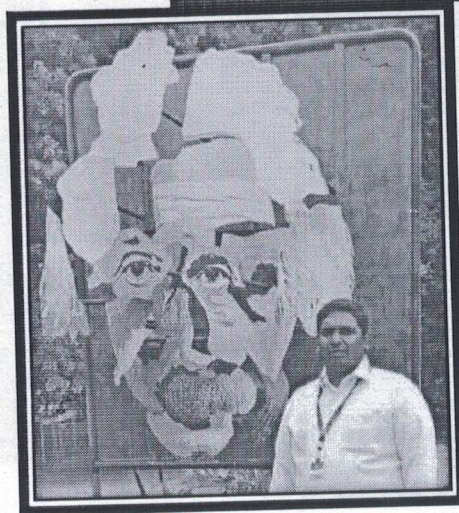
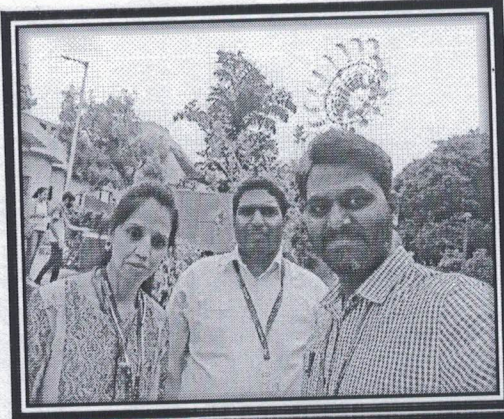


Sri  
**SAIRAM**  
 COLLEGE OF ENGINEERING  
 Anekal, Bengaluru

Accredited by NAAC  
 ISO 9001:2015 Certified Institution  
 Approved by AICTE, New Delhi  
 Affiliated to Visvesvaraya Technological University  
 www.sairamce.edu.in



**DEPARTMENT OF ELECTRICAL AND ELECTRONICS ENGINEERING**



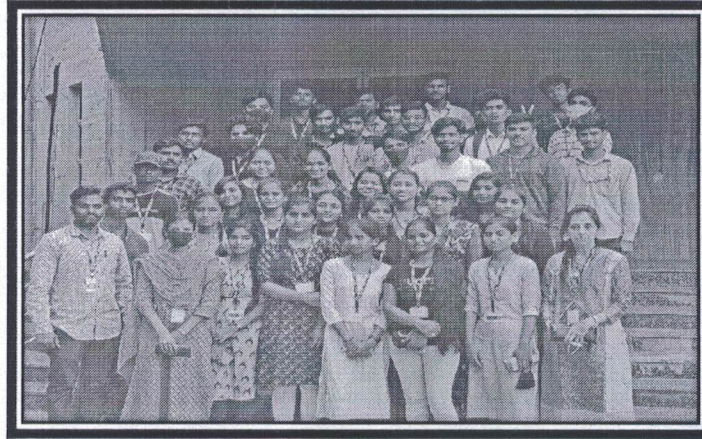


Sri  
**SAIRAM**  
COLLEGE OF ENGINEERING  
Anekal, Bengaluru

Accredited by NAAC  
ISO 9001:2015 Certified Institution  
Approved by AICTE, New Delhi  
Affiliated to Visvesvaraya Technological University  
www.sairamce.edu.in



**DEPARTMENT OF ELECTRICAL AND ELECTRONICS ENGINEERING**



After working the entire Jawaharlal Nehru Planetarium activities students returned safely by 5 pm on the same day.

Thanking you.

I. V. Co-ordinator

*Real - 10.0.21/6/22*  
**Head of the Department**  
**Head of the Department**  
Electrical & Electronics Engineering  
Sri Sairam College of Engineering  
Anekal, Bengaluru - 562 106.



*22/06/2022*